

College Sport Futsal

Information: Term 4, 2024

Auckland Netball Centre



Northern Region
Football



College Sport
Auckland



Summary

	Page
Key Contacts	3
Competition Dates & Timings	4
Referees	5
Simplified Regulations	6
Simplified Laws of the Game	7
Sideline Behaviour	9
Venue Information	10
Venue Layout	11
Kokkino Café	12
Health & Safety	13
Emergency Evacuation Plan	15

Key Contacts

Role	Name	Phone	Email
Venue Coordinator	Beth Rattray	021 675 648	N/A
Competitions Manager (College Sport Auckland)	Olivia Cundy	021 964 712	olivia@collegesport.co.nz
Futsal Development Manager	Aidan Wong	022 612 6011	aidan.wong@nrf.org.nz

Auckland Netball Centre

7 Allison Ferguson Drive, St Johns, Auckland

Competition Dates & Timings

Date	Game Week	Notes
18 th October	Round 1	
25 th October	Round 2	
1 st November	Round 3	
8 th November	Round 4	
15 th November	Round 5	
22 nd November	Round 6	
29 th November	Round 7	

Kick off times;

- 5:20 PM
- 6:00 PM
- 6:40 PM – 18th October Only



Referees

As you may be aware, Futsal is rapidly growing in popularity across Auckland. While this is exciting for the sport, it has also led to a shortage of qualified referees in the region. This shortage is particularly pronounced in South Auckland, where the increasing number of competitions and players is outpacing the availability of referees.

As the sport continues to expand, we are working diligently to address these challenges and ensure that all games are properly officiated.

With that in mind, we are actively seeking individuals who are passionate about Futsal and interested in becoming referees. If you or someone you know would like to get involved, we encourage you to reach out to NRF. We offer support and training to guide new referees on their journey, and all official appointments include financial reimbursement to recognize and compensate their valuable service.

Your involvement would make a significant impact on the growth and success of Futsal in our community, and we look forward to hearing from anyone who wishes to take part in this rewarding opportunity.

Please scan the QR code to register your interest.





Simplified Regulations

Equipment & Uniform

- **All players MUST wear non-marking footwear**
 - Non-compliance will result in the player not taking the field
 - Any repair costs for damages will be passed onto the school
- All players must wear same colour playing shirt, except for the goalkeeper who must wear a different coloured shirt or bib
- Shin pads with socks high enough to cover shin pads

Match Timings (40 minutes in total)

- 2x 16-minute halves
- 3-minute half time break
- 5-minutes between matches

Simplified Laws of the Game

5 players on the court per team; this includes a goalkeeper

Rolling substitutes, do not need to notify referee. Players must exit court before substitutes can enter

If the ball exits the field of play (side out), a kick-in takes place to restart play at the spot the ball exits

If the ball exits the field of play (goal line) it is either;

- Goalkeeper throw
- Corner kick

Players in possession of a restart of play, have 4 seconds to restart once the ball is set;

- kick in, free kick, corner kick, goalkeeper throw

All players including the goalkeeper are allowed on any part of the court including the penalty area

Simplified Laws of the Game cont.

Number of Players & Substitutions

- 5 players are on the court at one time (4 court players and 1 goalkeeper)
- Substitutions are unlimited “flying” substitutions.
- Players can re-enter the game from their own bench without notifying the referee.
- A substitute cannot enter the court until the player coming off has left the court.
- The referee must be notified if the goalkeeper is changed.

Equipment & Uniform

- All players must wear non-marking footwear
- All players must wear same colour playing shirt, except for the goalkeeper who must wear a different coloured shirt or bib
- Shin pads with socks high enough to cover shin pads

Start of Play:

From a kickoff, the ball is in play once it is kicked and moves in any direction. The opposing team must be inside their own half and outside the centre circle, or 3 meters away if no centre circle is present

Out of Play

- Ball is placed on the sideline or the corner. Ball must be stationary and kicked into the court. Only the kicker is allowed off the court
- Players have 4 seconds to kick the ball into play.
- All opposing players must be at least 5 meters from the ball.
- A goal cannot be scored directly from a kick-in unless it touches another player.
- The non-kicking foot can be anywhere (there are no foot fouls during kick-ins)
- The entire ball must be over the line for it to be out-of-bounds or a goal

Goalkeepers

- Goalkeepers may only play the ball (with any part of their body) once per possession inside their own half. Once a goalkeeper has released the ball, they cannot play the ball again in their own half of the court until the opposition has touched the ball or gone out of play (A save does not count as a touch).
- Goalkeepers have 4 seconds to control the ball in their own half.
- Goalkeepers are not allowed to pick up a back pass from any of their teammates.
- Goalkeepers must throw the ball from the goal area to restart from a goal clearance.
 - Opposition must be outside the penalty area during this restart
- Goalkeepers are not allowed to “drop-kick” the ball from a goal clearance

Fouls, Free Kicks, Penalties

- There is no offside rule in Futsal
- Players can score from direct free kicks, but not from indirect free kicks. Referees will inform teams which it is.
- Opposing players must be 5 meters from the ball during free kicks
- A penalty kick is awarded if a team commits a direct free kick inside the penalty area. All other players must be behind the ball and at least 5 meters away.
- If 2 or more players are in a “wall”, attackers must be at least 1 meter from the “wall”

GOOD SPORTS

"Hey Mum and Dad, this is how you can help me make this season a great one!"

- 1 Keep it FUN
- 2 Remember MY MISTAKES ARE FOR LEARNING
- 3 Focus on MY EFFORT & IMPROVEMENT
- 4 Please SUPPORT EVERYONE, INCLUDING THE OPPONENTS
- 5 After every game say to me "I LOVE WATCHING YOU PLAY"

www.goodsports.org.nz

 [goodsportsnz](https://www.facebook.com/goodsportsnz)



Sideline Behaviour

We understand the sporting environment can be highly competitive and stressful for all involved. However, due to the nature of the environment we are trying to create and the age group involved, College Sport Auckland & Northern Region Football will not tolerate any unsporting sideline behaviour in our environment.

As adults we ask you to be fostering a safe space for the children to play, focus more on enjoyment and skill development. Some players will naturally be competitive which is totally acceptable, however try not to put additional pressure on them to win or perform, but for them to enjoy the game and develop their skills.

NRF will have a zero-tolerance approach to any unsporting sideline behaviour towards a referee, staff member, opposition players/parents.

Anyone found not adhering to this principle will be asked to leave the premises.

However, if you find any supporters/parents or coaches getting worked up, please consider the following techniques to prevent/minimize any misconduct;

- Kindly remind them of the principles of kids' sport and the futsal environment
- Ask them to move further away from the playing environment out of earshot
- Ask the person to take a 5min walk away from the playing environment to cool down



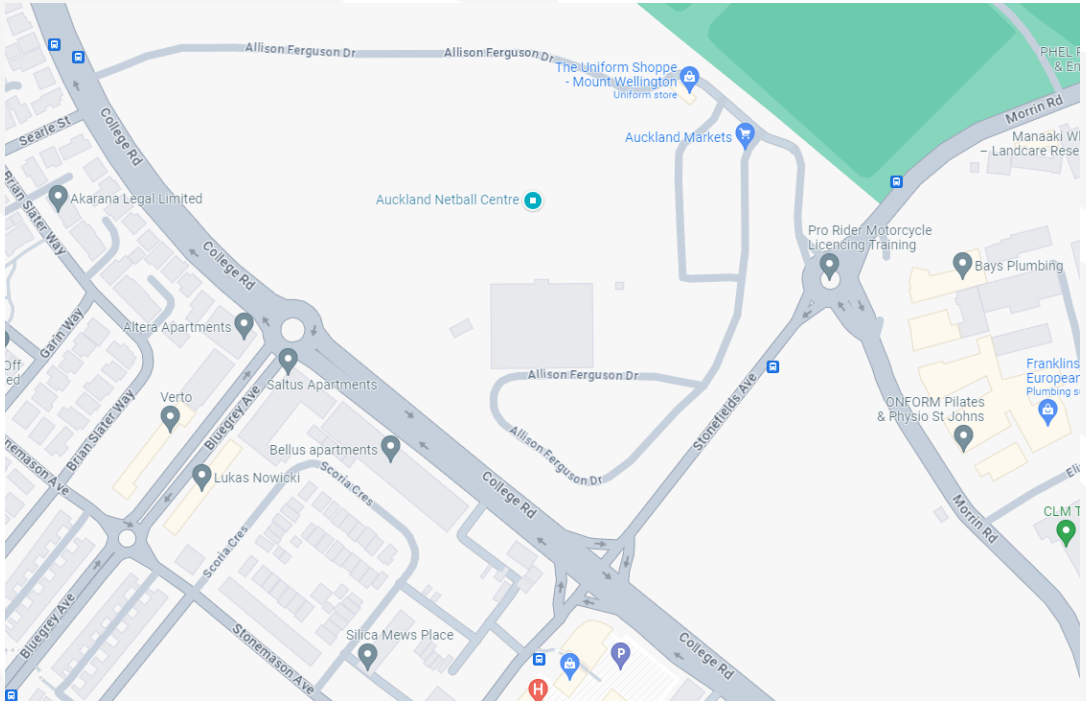
Venue Information

Auckland Netball Centre

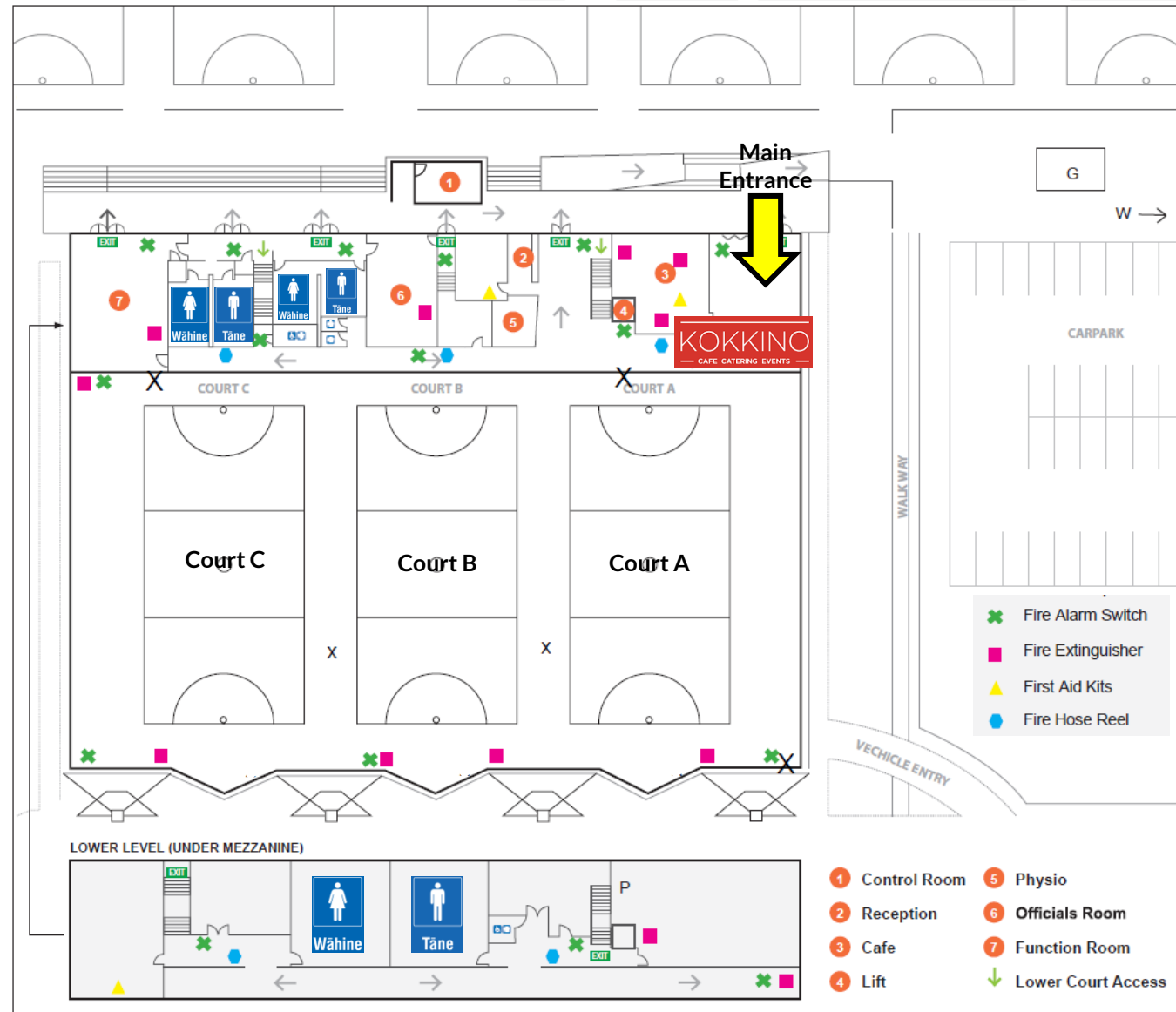
Located at 7 Allison Ferguson Drive, St Johns, the Auckland Netball Centre will be hosting the competition.

Auckland Netball Centre has a large indoor arena with 3 full size netball courts, these will serve as the area of play for the competition.

The facility offers 800 on-site carparks which are available for staff and participants to use.



Venue Layout



Kokkino Café

The on-site café will be open in the first few weeks of the competitions – 4.00PM to 7:00PM.

Please note they will be open on a temporary basis to see if it is viable for them to be open in the long run, so please do your best to support them.

Kokkino Café is located at the northeast corner of the building (upper-level) and has sight of the courts below.

They will be serving;

- Hot Chips
- Pizzas & Calzones
- Salads
- Tea & Coffee
- Cold Beverages



Health & Safety

Health & Safety is the responsibility of everyone who is in attendance – Venue Coordinator, players, coaches and spectators. This is to ensure everyone who attends is safe and injury free when departing the venue.

Please report any risks and/or hazards you might identify to the Venue Coordinator or venue staff. This may include but not limited to;

- Trip / slip hazards
- Falling objects
- Hazardous substances (i.e. chemicals)
- Fire & Electrical hazards

If you cannot contact Venue Coordinator or venue staff, please remove or reduce risk if safe to do so.



Health & Safety cont.

Nearby Medical Centres

Stonefields Medical Centre (Closes at 5:30 PM)

17/40 Stonefields Avenue, Stonefields, Auckland

- Head northeast out of the ANC carpark on Allison Ferguson Drive towards Morrin Road.
- Take the 3rd exit out of the roundabout onto Stonefields Avenue heading southbound towards College Road.
- At the traffic lights, continue straight for 100m. Stonefields Medical Centre will be situated on your left.

White Cross Healthcare (Closes at 8:00 PM)

110 Lunn Avenue, Mount Wellington, Auckland

- Head northeast out of the ANC carpark on Allison Ferguson Drive towards Morrin Road.
- Take the 3rd exit out of the roundabout onto Stonefields Avenue heading southbound towards College Road.
- At the traffic lights, turn right onto College Road.
- Continue straight through the roundabout on College Road.
- At the next traffic lights, turn left onto Ngahue Drive.
- Continue all the way down Ngahue Drive until you reach the Lunn Avenue intersection. Turn left and the medical center is directly on your right.



Emergency Evacuation Plan

EVACUATION

In the event of an evacuation, the hirer, occupants, participants and/or Auckland Netball Centre staff are to:

- Direct all participants and spectators to the designated evacuation area
- The evacuation area has been designated as the south car park
- Exit through the designated exit doors courtside
- Await further instruction and all clear from emergency services

SERIOUS INJURY

In the event a participant or member of the public sustains a serious injury, the hirer, occupants, participants and/or Auckland Netball Centre staff are to:

- Ensure their own safety first
- Stay with the patient
- Send someone to the offices to request assistance
- Inform the hirer/staff of the incident
- Try to keep the patient calm
- Manage the injury to eliminate risk of further injury
- Await further instruction from medical staff or management

SECURITY RISK

In the event of a security risk, the hirer, occupants, participants and/or Auckland Netball Centre staff are to:

- Ensure their own safety first
- Report the incident to the Building Warden (Venue Staff)
- Minimise the risk if possible, without jeopardising own safety
- Await further instruction from management

At any point you feel the need to, please do not hesitate to contact Emergency Services on 111 and seek further instructions.

Emergency Evacuation Plan cont.

FIRE DETECTION

A fire will automatically be detected by the building's Smoke Detection System and will sound the building's fire alarm throughout the building

OR

If a building occupant discovers a fire, operation of the nearest manual call point will activate the buildings fire alarm system.

On activation of the fire alarm system, you will need to contact the emergency services by dialing 111 to confirm existence of fire and deliver status report of occupants.

You will be required to meet New Zealand Fire Service on their arrival at the southeast roller door to advise of the emergency.

When the fire alarm is sounding, occupants and visitors located inside or outside the building are instructed to evacuate to the assembly point using the nearest emergency exits.

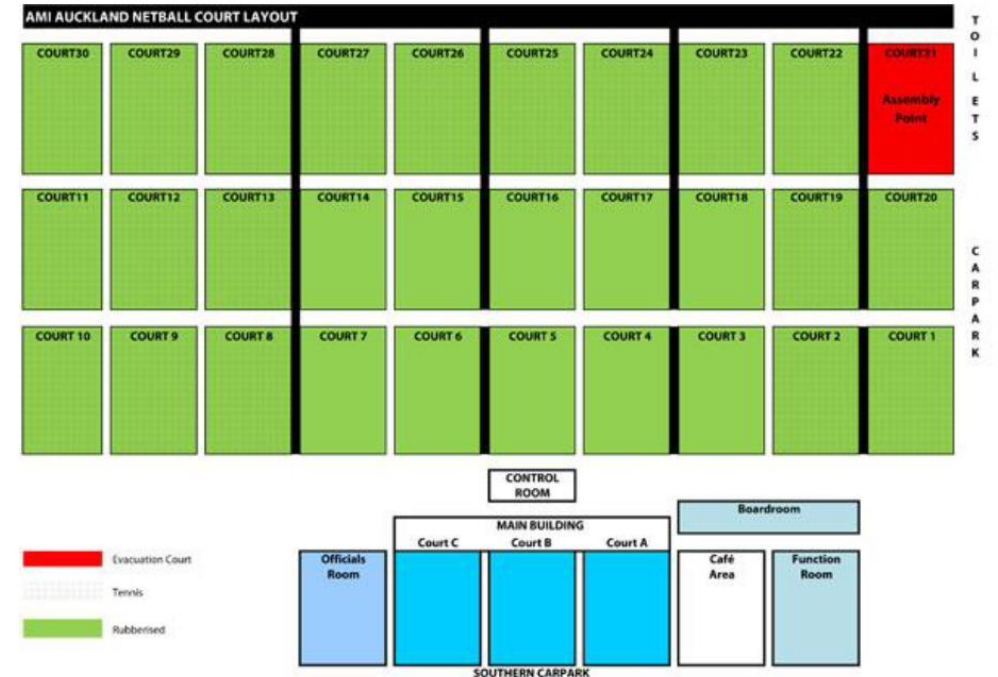
Auckland Netball Centre has full emergency access at the main entrance, players lobby, southeast roller door indoor courtside, and from fire exit doors east and west indoor courtside.

All occupants and visitors are to remain at the assembly point until the all clear is given.

The 'Venue Coordinator' will give the all clear after advice from the Fire Service.

ASSEMBLY POINT

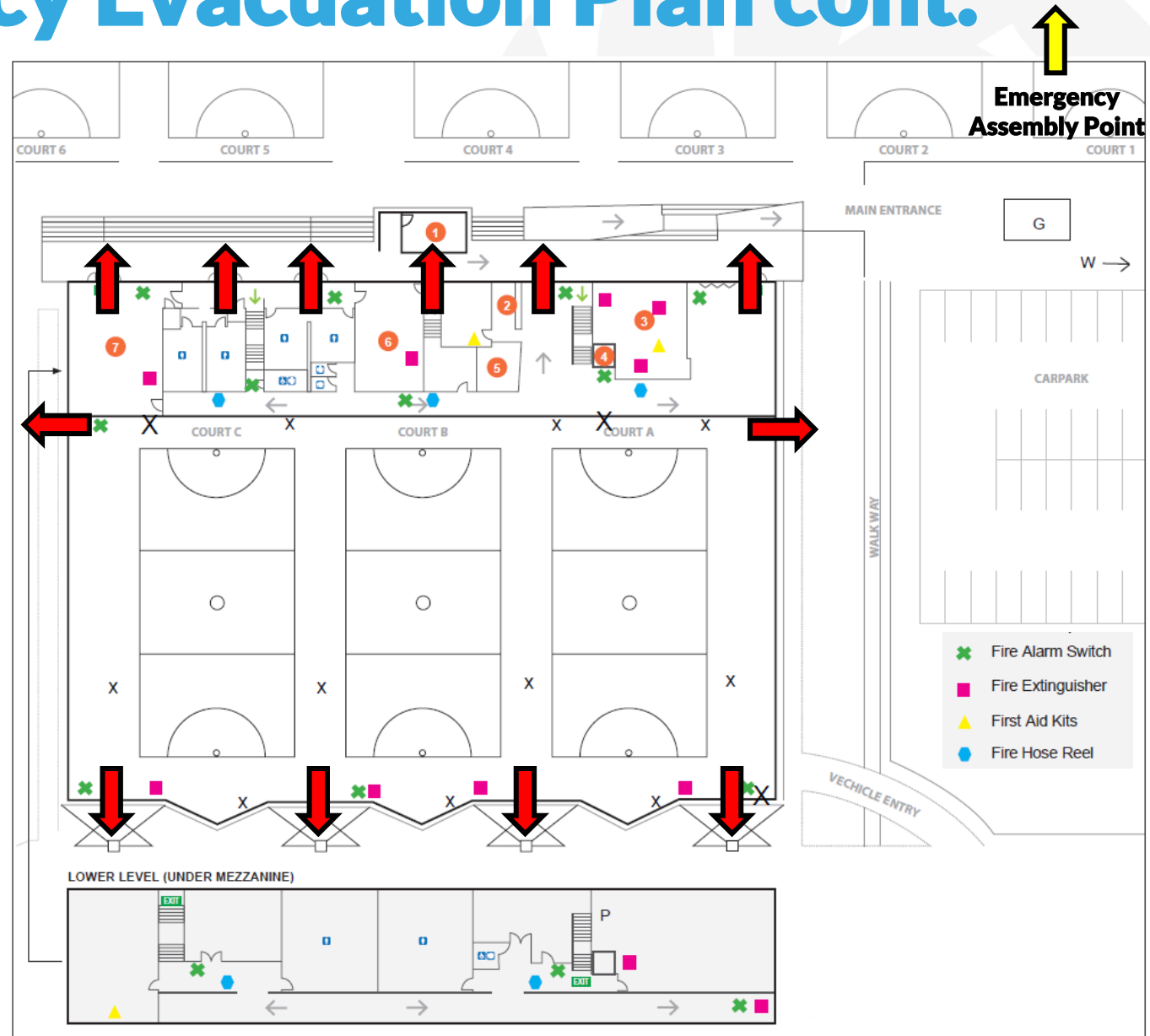
For occupants located anywhere inside the building or outside the building the assembly point is on the outside court #21 (see below).



All staff and visitors are to remain at the assembly point until the all clear is given. The building warden will give the all clear after advice from the Fire Service.

Emergency Evacuation Plan cont.

Emergency Exits





**Northern Region
Football**